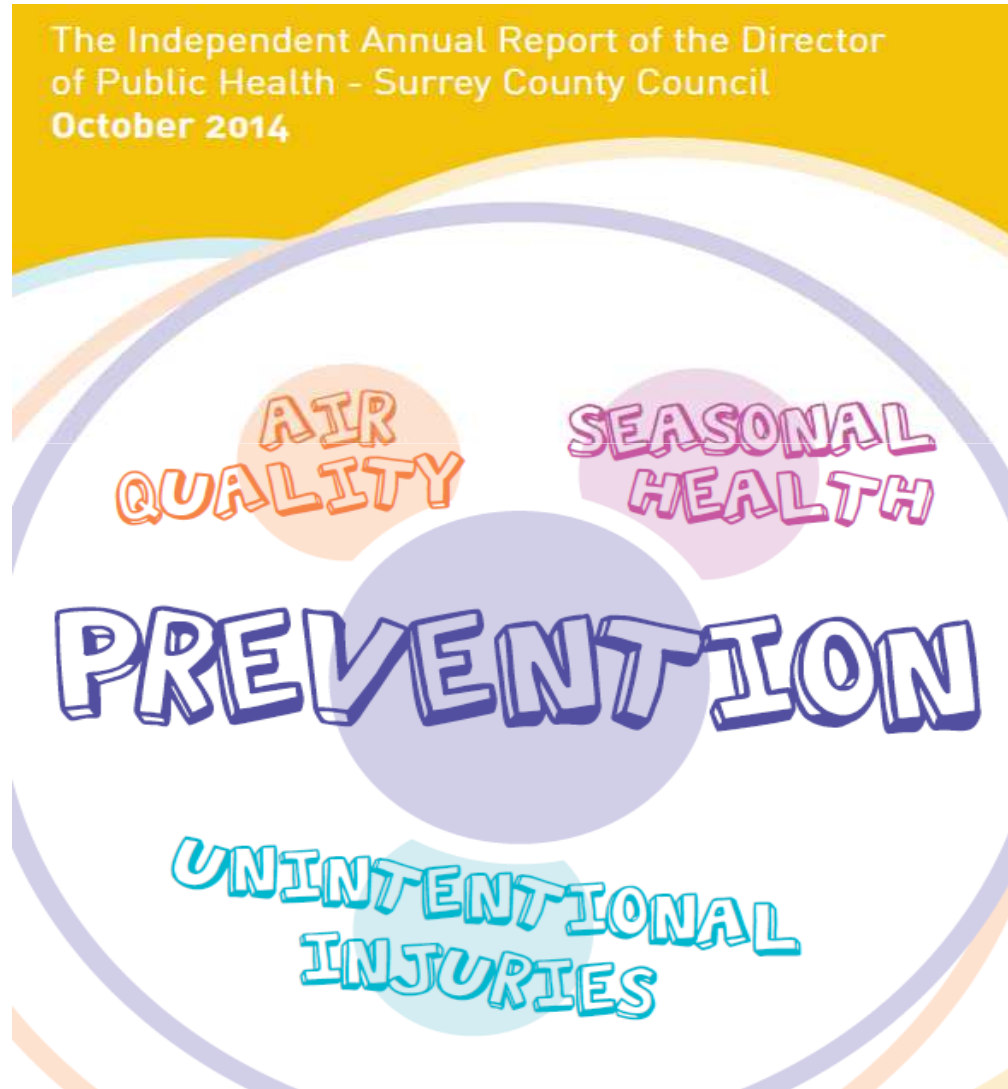


# Part 2 Annual PH Report - Oct 2014

---



Health and  
Wellbeing  
Surrey

# Air Quality

## FACT

It is estimated that 527 deaths during 2010 in Surrey were attributable to long term exposure to small particulate pollution

## Air

pollution causes (estimated) annual health costs of around £15 billion in the UK.

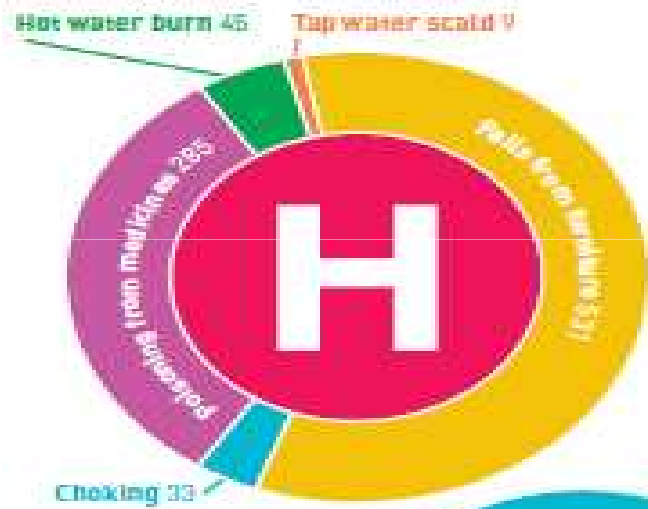
Surrey has 25 Air Quality Management Areas (AQMAs) in 8 of its 11 Districts and Boroughs. AQMAs are areas where pollutant levels have been exceeded.

## ESTIMATED DEATHS ATTRIBUTABLE TO AIR POLLUTION IN COMPARISON WITH OTHER COMMON CAUSES OF DEATH

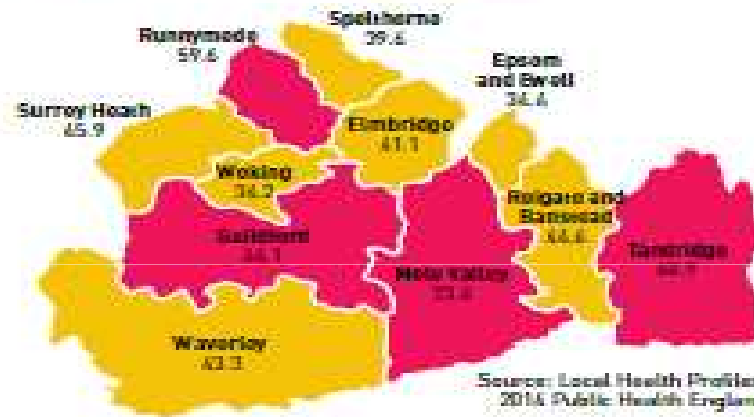


# Unintentional Injuries

HOSPITAL ADMISSIONS FOR UNINTENTIONAL INJURIES, FOR THOSE AGED 9 YEARS AND UNDER IN SURREY



ROAD INJURIES AND DEATHS IN SURREY PER 100,000 POPULATION 2010-2011



Significantly worse than England average  
Not significantly different from England Average

**FACT**  
There were 62,654 A&E attendances by Surrey residents due to unintentional and deliberate injury in 2010/11

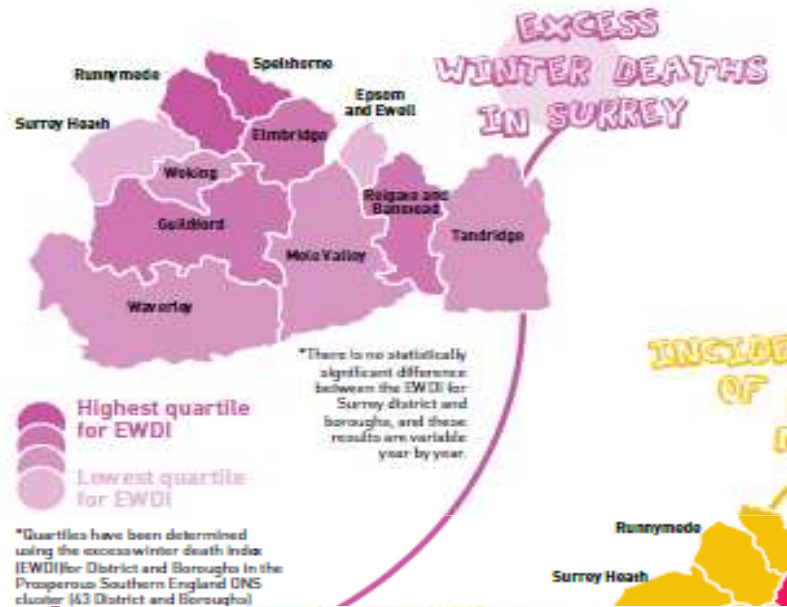
It is important to wear a mouth guard during contact sports such as rugby and hockey. Permanent teeth that have been knocked out can be placed back into the socket, ideally within 30 minutes.

# Seasonal Health

**FACT**  
 In Surrey, malignant melanoma of the skin is the eighth most common form of cancer. There were 589 recorded cases in Surrey over the period 2009-11 with the highest proportion of these in Waverley (88) and the lowest in Runnymede (26).

The Department of Energy and Climate Change estimate that in 2014, eight per cent of households in the South East, some 277,000 families, live in fuel poverty.

**FACT**  
 The uptake of seasonal flu vaccination is low in Surrey compared to the Public Health England target (75% of those aged 65 and over). During the winter of 2013/14, 68.9% of over 65s had a flu jab and only 46.8% of those in the other high risk groups had the vaccination.



Source: Local Health Profiles 2014, Public Health England

# Further information

---

## Further information

To access an electronic copy of the report and further information including details behind some of the fact and figures in this document, a glossary and a list of references, go to: [www.surreyl.gov.uk/annualpublichealthreport](http://www.surreyl.gov.uk/annualpublichealthreport)